

Tell-Tales consist of two plates which overlap for part of their length. One plate is calibrated in millimeters and the overlapping plate is transparent and marked with a hairline cursor. As the crack width opens or closes, one plate moves relative to the other. The relationship of the cursor to the scale represents the amount of movement occurring. Range ± 20 mm – Resolution 1 mm. The tell-tales are fixed with screws and adhesive across the crack to be monitored.

The **Standard Tell-Tale** is produced in durable acrylic plastic and is used for monitoring movement across cracks in vertical and horizontal directions on flat surfaces.

Coefficient of thermal expansion: $7 \times 10^{-5} \text{cm/cm/}^\circ\text{C}$.

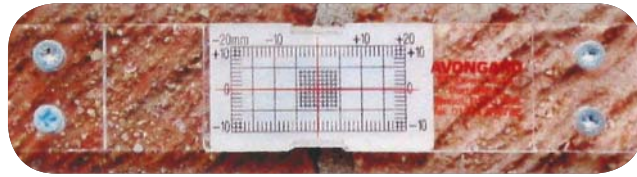
The **Corner Tell-Tale Plus** is produced in polycarbonate and can be used for monitoring movement across cracks in internal and external corners. The TELL-TALE is hinged for use with internal corners ranging from 70° – 180° . When used in pairs three dimensional movement can be monitored.

Coefficient of thermal expansion: $7 \times 10^{-5} \text{cm/cm/}^\circ\text{C}$.

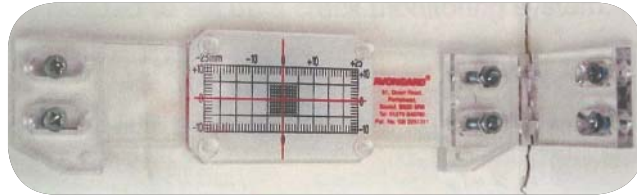
The **Displacement Tell-Tale Plus** is produced in PVC rigid sheet and is used for monitoring movement across cracks when one surface moves out of plane with the other. The TELL-TALE monitors out of plane movement.

Coefficient of thermal expansion: $7.3 \times 10^{-5} \text{cm/cm/}^\circ\text{C}$.

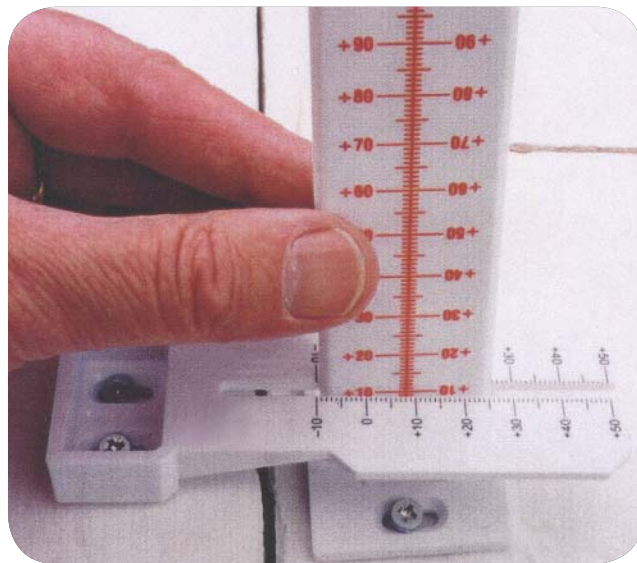
The **Tell-Tale 'Plus'** offers a weather resistant design that monitors the opening or closing of a crack to an accuracy of 1.0 mm, or to an accuracy of ± 0.1 mm with calipers. Monitor vertical and horizontal movement with supplied crack record sheets. Also offers increased horizontal monitoring range to ± 25 mm and manufactured in vandal resistant polycarbonate. Fixing slots and "extra grip" surface improves screw and adhesive fixings.



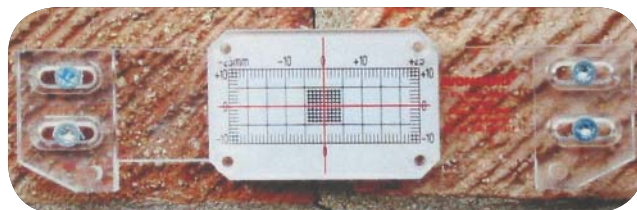
Standard Tell-Tale



Corner Tell-Tale Plus



Displacement Tell-Tale Plus



Tell-Tale 'Plus'

ORDERING INFORMATION

Standard Tell-Tale	TT0001
Corner Tell-Tale	TT0002
Displacement Tell-Tale Plus	TT0004
Tell-Tale Plus	TT0005

Specifications may change without notice. EXB0008E



RST Instruments Ltd.
 200 - 2050 Hartley Ave., Coquitlam, BC Canada V3K 6W5
 Telephone: +1-604-540-1100 • Facsimile: +1-604-540-1005
 Toll Free (USA & Canada): 1-800-665-5599
 Email: info@rstinstruments.com
www.rstinstruments.com

The RST Instruments Management System is certified to ISO 9001:2000

